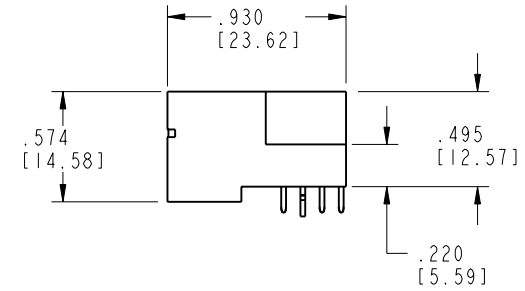
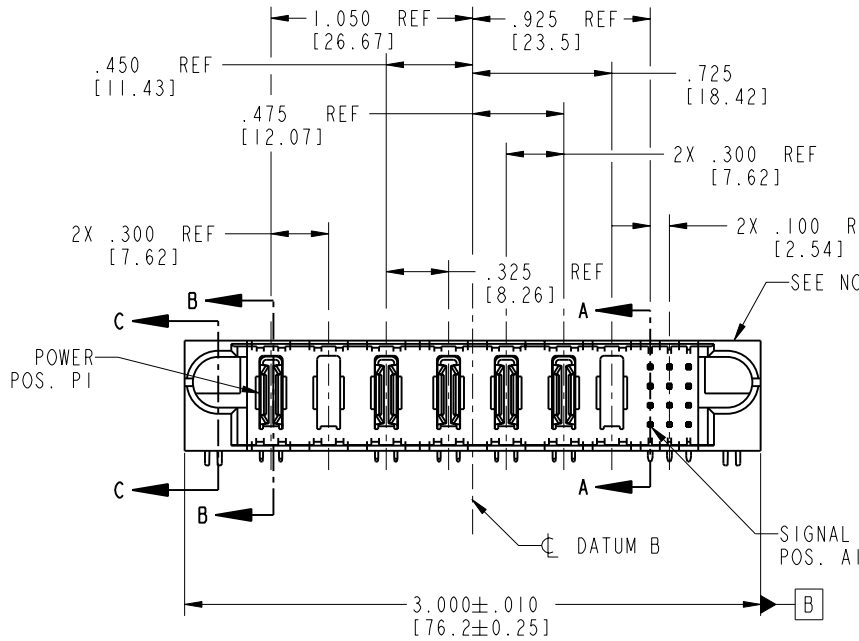


Tous droits strictement réservés. Reproduction ou communication o des liens interdite sous quelque forme que ce soit sans autorisation écrite du propriétaire. Propriété de c FCI. Droits de reproduction FCI.

All rights strictly reserved. Reproduction or issue to third parties in any form whenever is not permitted without written authority from the proprietor. Property of FCI. Copyright FCI.

**FCI**

PRODUCT NO.	ROWS	POWER							SIG.				
		E1	P1	P2	P3	P4	P5	P6	P7	1	2	3	E2
51939-042-- NOTE: (3)	D C B A												



CODE	DIM "M" MATING LENGTH	CONTACT TYPE
E	.220 [5.59]	SIGNAL
R	.270 [6.86]	SIGNAL
S	.270 [6.86]	SIGNAL
T	.270 [6.86]	SIGNAL
U	.270 [6.86]	SIGNAL
PA	N/A [N/A]	POWER
HA	N/A [N/A]	HOLD-DOWN

mat'l code				SEE NOTE 2		tolerances unless otherwise specified		CUSTOMER		<b>FCI</b> www.fciconnect.com	
ltr	ecn no.	dr	date	linear	.XX±.01/0.X±0.3		COPY		title 3ACP + 4P + 12S		
A	V03-0129	TAB	01/30/03		.XXX±.005/0.XX±0.13		projection		RIGHT ANGLE SOLDER HEADER		
B	DG05-0206	SJ	07/05/05	angles	.XXX±.0020/0.XXX±0.051		INCH/MM		product family PwrBlade		code 213
C	DG06-0008	JMG	01/07/06		0°±2°		scale 1:1		size dwg no		sheet 1 of 4
sheet index		revision sheet		C	C	C	C	A 51939-042			
		1	2	3	4	cage code 22526				4	

Pro/E

PDM: Rev:C

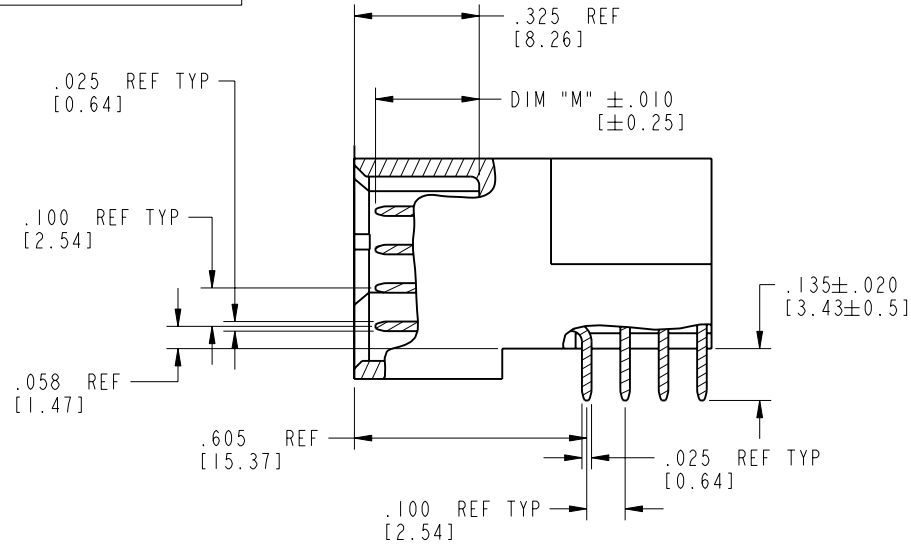
STATUS: Released

Printed: Aug 14, 2007

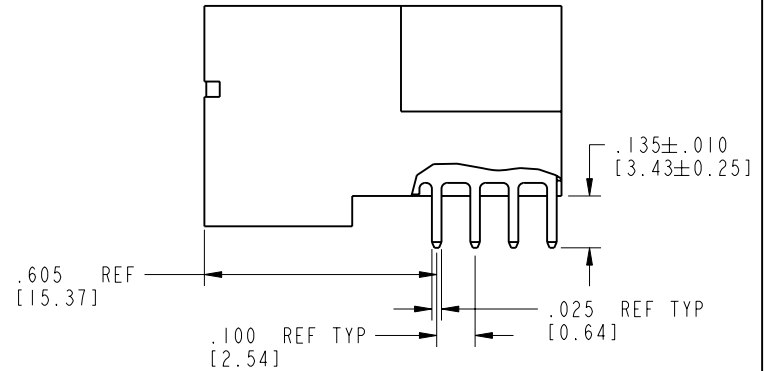
Tous droits strictement réservés. Reproduction ou communication o des liers interdite sous quelque forme que ce soit sans autorisation écrite du propriétaire. Propriété de c FCI. Droits de reproduction FCI.

All rights strictly reserved. Reproduction or issue to third parties in any form whatever is not permitted without written authority from the proprietor. Property of FCI. Copyright FCI.

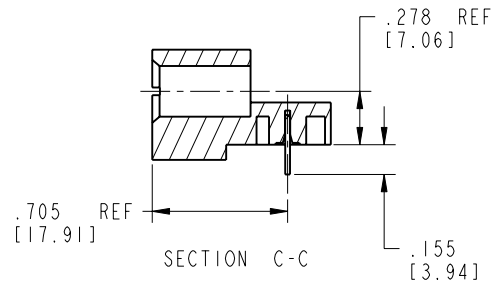
PRODUCT NUMBER  
51939-042--  
NOTE: ③




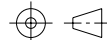
BROKEN-OUT SECTION A-A  
SCALE 2:1



BROKEN-OUT SECTION B-B  
SCALE 2:1



SECTION C-C

mat'l code		SEE NOTE 2		tolerances unless otherwise specified		CUSTOMER		 <b>FCI</b> www.fciconnect.com	
lfr	ecr no.	dr	date	linear	.XX±.01/0.X±0.3	COPY			
C				linear	.XXX±.005/0.XX±0.13	projection			
				angles	.XXX±.0020/0.XXX±0.051	INCH/MM			
				dr	T. BRUNGARD 01/30/03	scale		product family PwrBlade code 213 size dwg no 51939-042 sheet 2 of 4	
				engr	M. MOSTOLLER 01/30/03	1:1			
				chr	M. MOSTOLLER 01/30/03			sheet 2 of 4	
				appd	M. MOSTOLLER 01/30/03				
sheet index	revision sheet								

cage code 22526

Pro/E

PDM: Rev:C

STATUS: Released

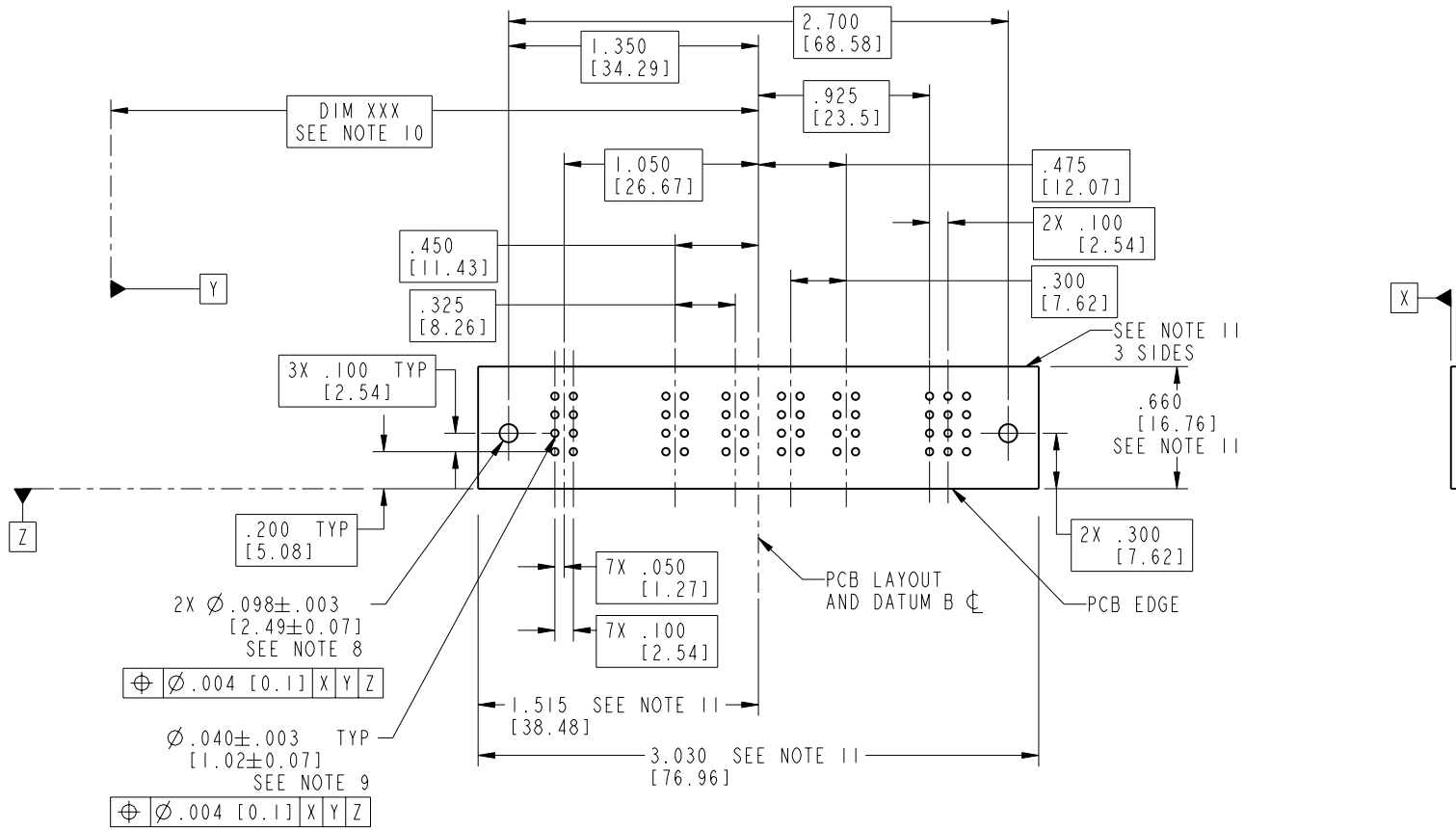
Printed: Aug 14, 2007

Tous droits strictement réservés. Reproduction ou communication o des liers interdite sous quelque forme que ce soit sans autorisation écrite du propriétaire. Propriete de c FCI. Droits de reproduction FCI.

All rights strictly reserved. Reproduction or issue to third parties in any form, whenever is not permitted without written authority from the proprietor. Property of FCI. Copyright FCI.

PRODUCT NUMBER

51939-042--  
NOTE: ③



RECOMMENDED PCB LAYOUT

mat'l code				SEE NOTE 2		tolerances unless otherwise specified		CUSTOMER		 www.fciconnect.com	
ltr	ecn no.	dr	date	linear	.XX±.01/0.X±0.3	projection	COPY		title		
C				angles	.XXX±.005/0.XX±0.13		3ACP + 4P + 12S		RIGHT ANGLE SOLDER HEADER		
				dr	.XXX±.0020/0.XXX±0.051	INCH/MM	product family		PwrBlade		code
				enrg	0° ± 2°	scale	size		dwg no		213
				chr		1:1	A		51939-042		sheet
				appd							3 of 4
sheet index	revision sheet										

cage code 22526

Pro/E

PDM: Rev:C

STATUS: Released

Printed: Aug 14, 2007

Tous droits strictement réservés. Reproduction ou communication o des liers interdite sous quelque forme que ce soit sans autorisation écrite du propriétaire. Propriete de c FCI. Droits de reproduction FCI.

All rights strictly reserved. Reproduction or issue to third parties in any form, whenever is not permitted without written authority from the proprietor. Property of FCI. Copyright FCI.



PRODUCT NUMBER

51939-042--  
NOTE: ③

NOTES:

1. DIMENSIONS AND TOLERANCES ARE IN ACCORDANCE WITH ASME Y14.5M, 1994 UNLESS OTHERWISE SPECIFIED.

CONNECTOR NOTES:

2. HOUSING MATERIAL: UL 94 V-0 GLASS FILLED HIGH-TEMP THERMOPLASTIC  
POWER CONTACT MATERIAL: COPPER ALLOY  
SIGNAL PIN MATERIAL: COPPER ALLOY

③ 51939-042;51939-042LF;51939-042GLF PLATING SPEC. SEE PRINT:10064183

4. MANUFACTURER'S NAME, P/N, AND DATE CODE TO APPEAR ON THIS SURFACE.

5. PRODUCT SPECIFICATION GS-12-149.  
APPLICATION SPECIFICATION BUS-20-067.

6. PACKAGED IN TRAYS.

PCB NOTES:

7. ALL HOLE DIAMETERS ARE FINISHED HOLE SIZE.

8. MOUNTING HOLES, WHERE APPLICABLE, ARE UNPLATED.

9.  $\varnothing .0453 \pm .0010$  [1.151 $\pm$ 0.025] DRILLED HOLES PLATED WITH .0003 [0.008] MIN SnPb OVER .001 [0.03] TO .003 [0.08] Cu PLATING TO ACHIEVE  $\varnothing .040 \pm .003$  [1.02 $\pm$ .07] HOLE.

10. "DIM XXX" TO BE DETERMINED BY THE CUSTOMER.

11. CONNECTOR KEEP-OUT ZONE.

mat'l code		SEE NOTE 2		tolerances unless otherwise specified		CUSTOMER		www.fciconnect.com	
ltr	ecn no.	dr	date	linear	.XX±.01/0.X±0.3	COPY			
C				linear	.XXX±.005/0.XX±0.13	projection		title 3ACP + 4P + 12S	
				angles	.XXXX±.0020/0.XXX±0.051			RIGHT ANGLE SOLDER HEADER	
				dr	T. BRUNGARD 01/30/03	INCH/MM		product family PwrBlade code	
				enrg	M. MOSTOLLER 01/30/03			size 213	
				chr	M. MOSTOLLER 01/30/03	scale 1:1		sheet 4 of 4	
				appd	M. MOSTOLLER 01/30/03			A 51939-042	
sheet index	revision sheet								

cage code 22526

Pro/E

PDM: Rev:C

STATUS: Released

Printed: Aug 14, 2007